

# School Development Plan 2025-2026

Enhance Forest Phase Early Years provision and Foundation Learning within school, improving staff knowledge of child development, the importance of play and their role as an enabling adult. Refine the curriculum to ensure it promotes choice and independence, values play-based learning, authentic learning experiences, and outdoor learning, while ensuring progression in coordination, speech, language, and communication skills, reading, writing, number, and social and emotional development.

Upskill middle leaders to refine curriculum schemes of work, strengthening assessment and progression planning within AOLEs, enhancing teachers' continuous and formative assessment methods to ensure pupil progress. Improve pupils' Welsh language development and English oracy skills across the curriculum.

Enhance Sea View's community engagement and partnership working to enhance opportunities for raising pupil aspiration and achievement.

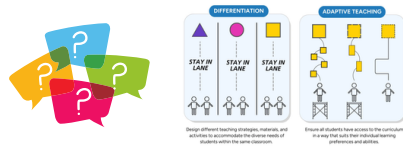
## Continue Developing Forest Phase



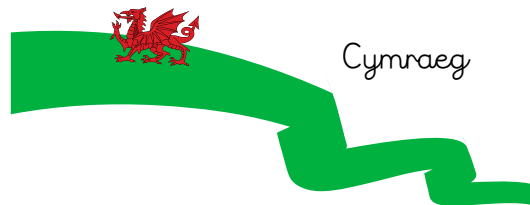
### Enabling Adults, Play & Pedagogy



### Questioning, Assessment & Adaptive Teaching



### Refining Provision



Cymraeg



Siarter Iaith

Oracy



Challenges



Pupil Voice



All Staff as Leaders  
**LEADERSHIP**



### Community & Parental Engagement Events



RSE

